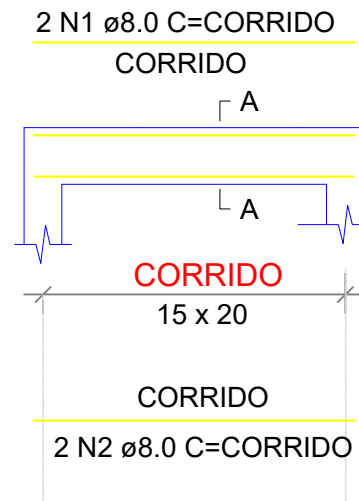
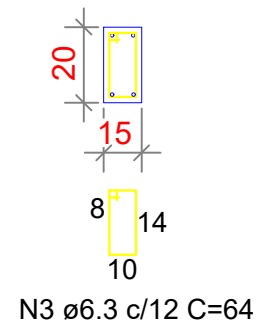


CINTA PLATIBANDA

ESC 1:40

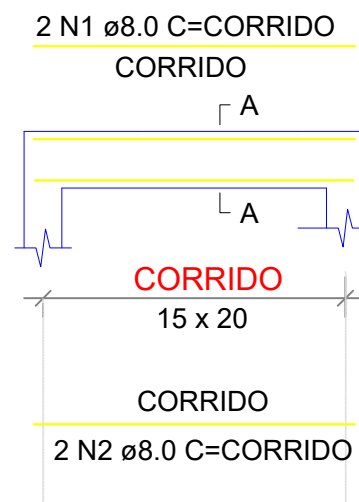


SEÇÃO A-A

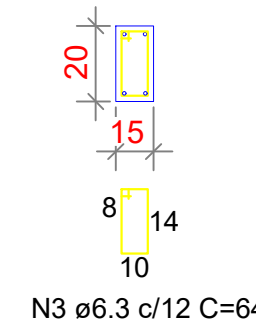


CINTA CAIXA DE ÁGUA

ESC 1:40

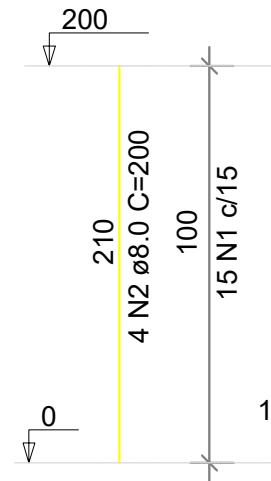


SEÇÃO A-A



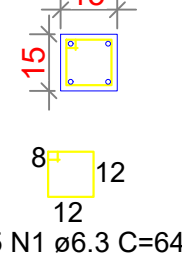
PILARES CAIXA DE ÁGUA

ESC 1:40



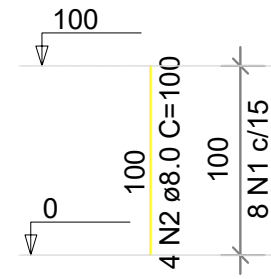
SEÇÃO

ESC 1:25



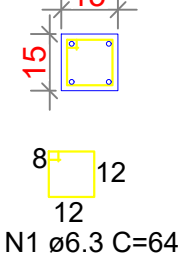
PILARES PLATIBANDA

ESC 1:40



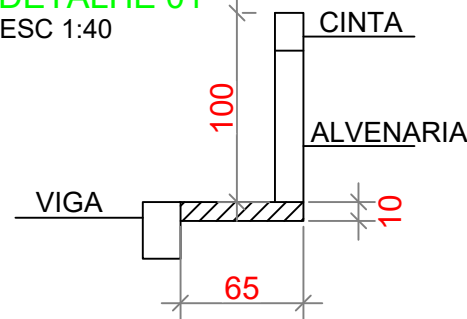
SEÇÃO

ESC 1:25

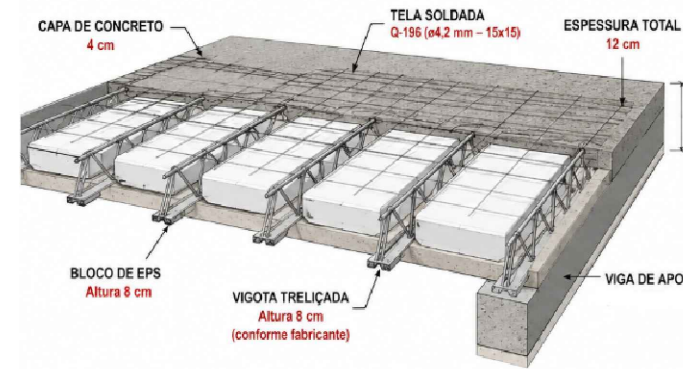


DETALHE 01

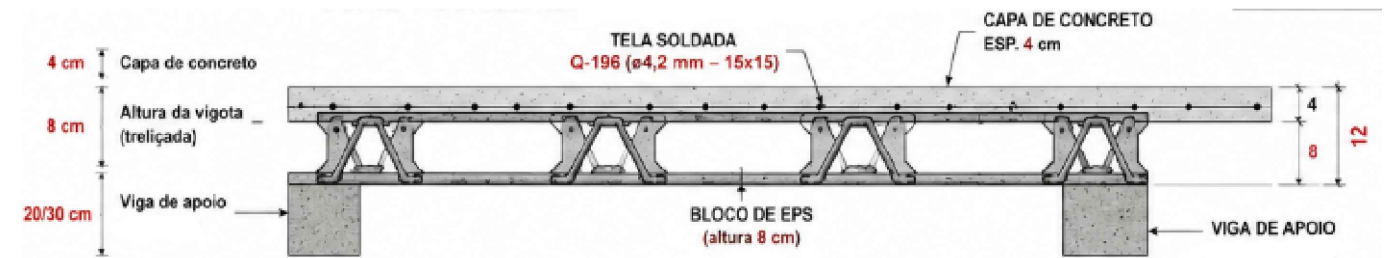
ESC 1:40



LAJE TRELIÇADA – ESPESSURA TOTAL 12 cm



PLANTA BAIXA – SENTIDO DAS VIGOTAS



REVISÃO	00	MARIANA	LANÇAMENTO INICIAL	DATA: 12/03/2026
---------	----	---------	--------------------	------------------

OBRA:
OBRA CRAS – MARIANO MORO

DESCRIÇÃO:
PROJETO ESTRUTURAL



PROPRIETÁRIO:

PREFEITURA DE MARIANO MORO
CNPJ: 87.613.386/0001-95

DESCRIÇÃO:
PLATIBANDA E CAIXA DE ÁGUA

LOCAL:
MARIANO MORO/RS

RESP. TÉCNICO PROJETO:

Eng. Civil MARIANA SIMONI
CREA RS: 263083

DESENHO:
MARIANA

PROJETO:
ESTRUTURA CIVIL

ESCALA:
1:INDICADA

PRANCHA:
EST-312